

KROSS WEBCAM

KR50WC

USER MANUAL

Introduction

Thanks for choosing our new generation of Web Camera! It is a high performance web digital product guaranteed by our technology and quality. It is a PNP (Plug and Play) product for real-time data transmission to PC Via USB port. It has a high resolution and fast transmission rate, and it is also nice-looking and convenient life experience with your distant friends and families.

Parameters And Features

- * 4.0 mega pixel video mode and 8.0 mega pixel maximum capture/picture mode (interpolated)
- * Large window capture size: 3200X2400 (8.0 mega pixel interpolated)
- * Video mode: RGB24 / 1420
- * Interface: USB 2.0 port and down compatible USB 1.1 port
- * Transmission rate: (640X480) 30F/S (12980X960) 10-15F/S 1600X1200, 2304X1728, 2560X2048, 3200X2400 (picture size)
- * Signal-Noise ratio: Larger than 48dB
- * Dynamic range: Larger than 72dB
- * Image focus: 3 cm to infinity
- * Non-Compression Image Processor
- * AWB (Automatic Whiteness Balance)
- * Manual Focus Function
- * Fast Snap Button
- * 5-Element Glass Lens with High Definition
- * Automatic Face Tracking

System requirements

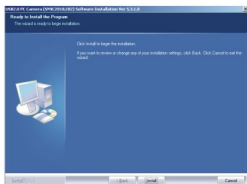
- * IBM PC or compatible PC or laptop with USB port
- * Pentium 1G or higher CPU
- * Windows 2000 / Windows XP / Windows 2003 / Vista

- * CD-ROM driver
- * 256MB memory
- * Support DirectX 9.0 VGA card

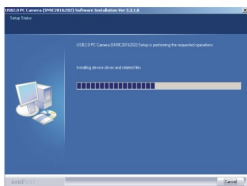
Driver installation

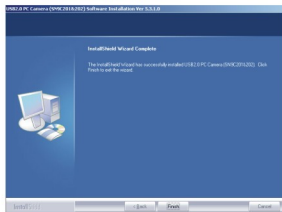
Notice: DO NOT PLUG WEB-CAM INTO USB PORT BEFORE DRIVER IS INSTALLED! If have already plugged the PC-Cam, please get it unplugged and follow the following Step.

1. Insert Driver/Application Disc into CD-ROM driver, open the driver directly and double click Setup.exe and the system will automatically run necessary files and display windows as following:



Click(Install)





Click (FINISH)

2. Plug Web Camera into USB2.0 port, the system will detect the device and complete the installation automatically.

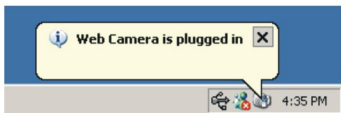


Click (NEXT)

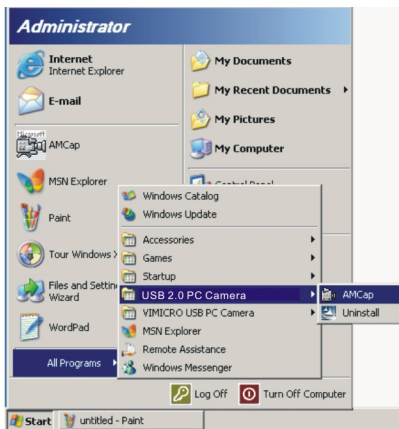


Click (FINISH)

When installation is completed, you will find a Camera Icon in your task bar.



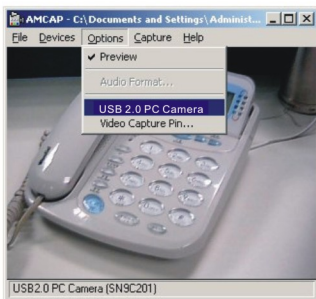
Start your Web Cam by selecting the Application Program from Start menu as shown below.

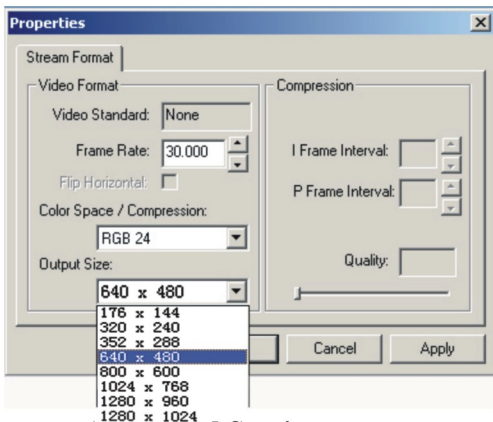


You will see the preview picture of the Web-Cam



By Clicking the Video Capture Pin.... from Option Menu you can adjust the resolution of preview window

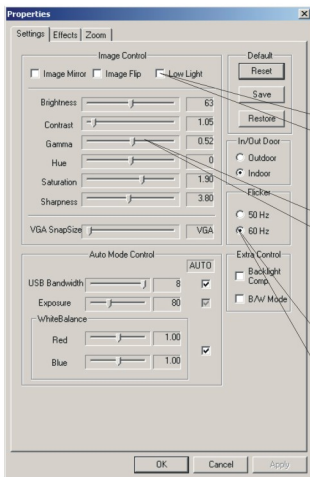




Advanced Settings

By clicking the Video Capture Filter, You can enter into advanced settings

From this page you can adjust the quality of the picture

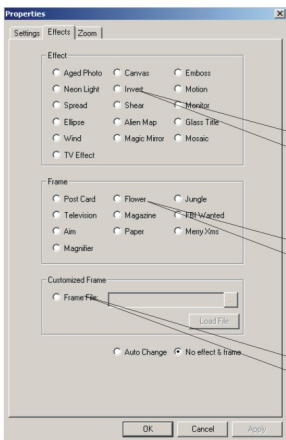


Click it under low-light surrounding

Adjust the parameter to your favorite setting

It's very important to set the frequency the same as your local power supply

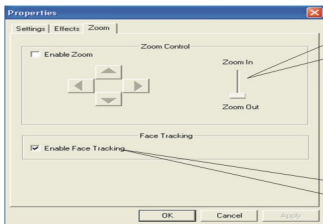
This page you can set 18 special effects as well as 10 photo frames for your pictures



Special effects setting field

Photo frame setting field

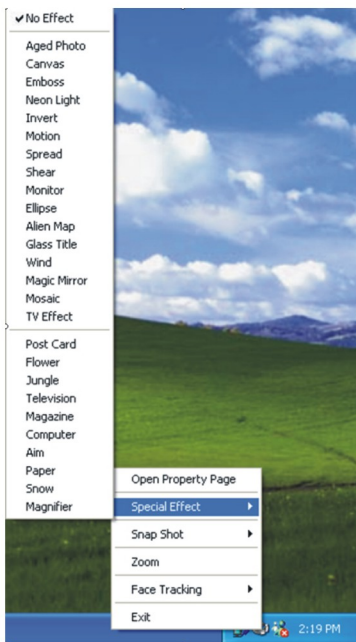
With this function, user can even edit the photo frame themselves

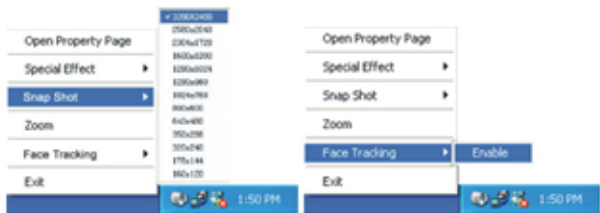


Click check in certain mode, Users can achieve digital zoom and picture moving function.

Click here to enable face tracking at 640X480 resolution or below

The advanced setting can also be accomplished simply by right click on the Camera Icon in Taskbar





Cautions!

- * If the webcam becomes hot while been used for a long time, It is suggested to turn off the unit off to cool then continue to use.
- * Avoid contact to the lens with hands, sharp, or coarse objects, use only a soft clean cloth to clean
- * Do not use in hot, cold, dusty, or humid condition
- * Avoid dropping the webcam as much as possible, severe Drops may cause damage to the lens, malfunctions or scratches to the surface